

## Purified Anti-Human CD62L/SELL Antibody[DREG.55]

catalog number: AN004770P

**Note:** Centrifuge before opening to ensure complete recovery of vial contents.

### Description

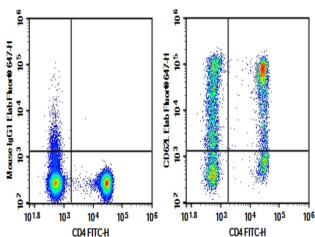
<b>Reactivity</b>	Human
<b>Immunogen</b>	Recombinant Human CD62L/SELL protein
<b>Host</b>	Mouse
<b>Isotype</b>	Mouse IgG1, $\kappa$
<b>Clone</b>	DREG.55
<b>Purification</b>	>98%, Protein A/G purified
<b>Buffer</b>	Phosphate-buffered solution, pH 7.2, containing 0.05% non-protein stabilizer. Dialyze to completely remove the stabilizer prior to labeling.

### Applications

### Recommended Dilution

<b>FCM</b>	2 $\mu$ g/mL (0.5 $\times$ 10 <sup>6</sup> -1 $\times$ 10 <sup>6</sup> cells)
------------	---

### Data



Human peripheral blood lymphocytes cell were stained with 0.2  $\mu$ g Purified Anti-Human CD62L/SELL Antibody[DREG.55] (Right) and 0.2  $\mu$ g Mouse IgG1,  $\kappa$  Isotype Control (Left), followed by Elab Fluor® 647-conjugated Goat Anti-Mouse IgG Secondary Antibody, then anti-Human CD4 FITC-conjugated Monoclonal Antibody.

### Preparation & Storage

<b>Storage</b>	Store at 4°C valid for 12 months or -20°C valid for long term storage, avoid freeze / thaw cycles.
<b>Shipping</b>	Ice bag

### Background

This gene encodes a cell surface adhesion molecule that belongs to a family of adhesion/homing receptors. The encoded protein contains a C-type lectin-like domain, a calcium-binding epidermal growth factor-like domain, and two short complement-like repeats. The gene product is required for binding and subsequent rolling of leucocytes on endothelial cells, facilitating their migration into secondary lymphoid organs and inflammation sites. Single-nucleotide polymorphisms in this gene have been associated with various diseases including immunoglobulin A nephropathy. Alternatively spliced transcript variants have been found for this gene.

### For Research Use Only